



# Trust in LUNOS

## FRESH AIR FOR GENERATIONS

### Quality is what stands the test of time

LUNOS Lüftungstechnik GmbH für Raumluftsysteme is a Berlin-based company and market leader for decentralised residential ventilation systems. The company was founded in 1959 and is still based in Berlin-Spandau. In 2019 a second location was opened in Brandenburg. This created even more expansion opportunities for the company, which manufactures its products Made in Germany and sells them in over 36 countries worldwide. In Germany, the products are sold through the three-level distribution channel.

### LUNOS stands for more than a living climate

The core competencies of LUNOS are decentralised controlled residential ventilation with and without heat recovery as well as the development and manufacture of energy-efficient fans and external wall diffusers. In addition, LUNOS develops all associated components as well as many other products such as exhaust air fans and facade ventilation systems with concealed ventilation openings.

For decades LUNOS stood for highest quality, functionality and comfort. Ventilation systems, with or without heat recovery, improve the air quality in the house and save energy in everyday life at the same time.

Made in Germany



### INFORMATION

On our homepage [www.lunos.de/en](http://www.lunos.de/en) you will find data sheets, user information and much more.





SYSTEM WITH **HEAT RECOVERY**

**LUNOS**  
energy-efficient





# Controlled home ventilation

System with heat recovery

## 02 SYSTEM WITH HEAT RECOVERY

With this particularly efficient system, all rooms in the residential unit are equipped with heat recovery units - exactly where they are needed. If you are interested in this type of ventilation, we recommend our proven e<sup>2</sup> series fans.

### Series e<sup>2</sup> A A+

Axial external wall ventilators with regenerative heat recovery for living rooms and bedrooms, can be combined with LUNOtherm.



### e<sup>90</sup> A

Exhaust fan with heat recovery for functional rooms.



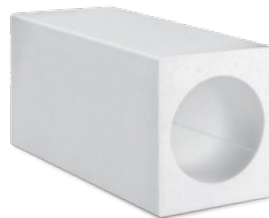
### Ne<sup>xt</sup> A

Radial external wall ventilator with recuperative heat recovery for living rooms, bedrooms and functional rooms. Wall ducting via 160 mm round duct.



### 9/MRD

Wall-mounted housing to accommodate the 160 round duct. H x W x D: 240 x 210 x 500 mm



### LUNOtherm-S

Facade element, without disturbing ventilation grille on the facade.





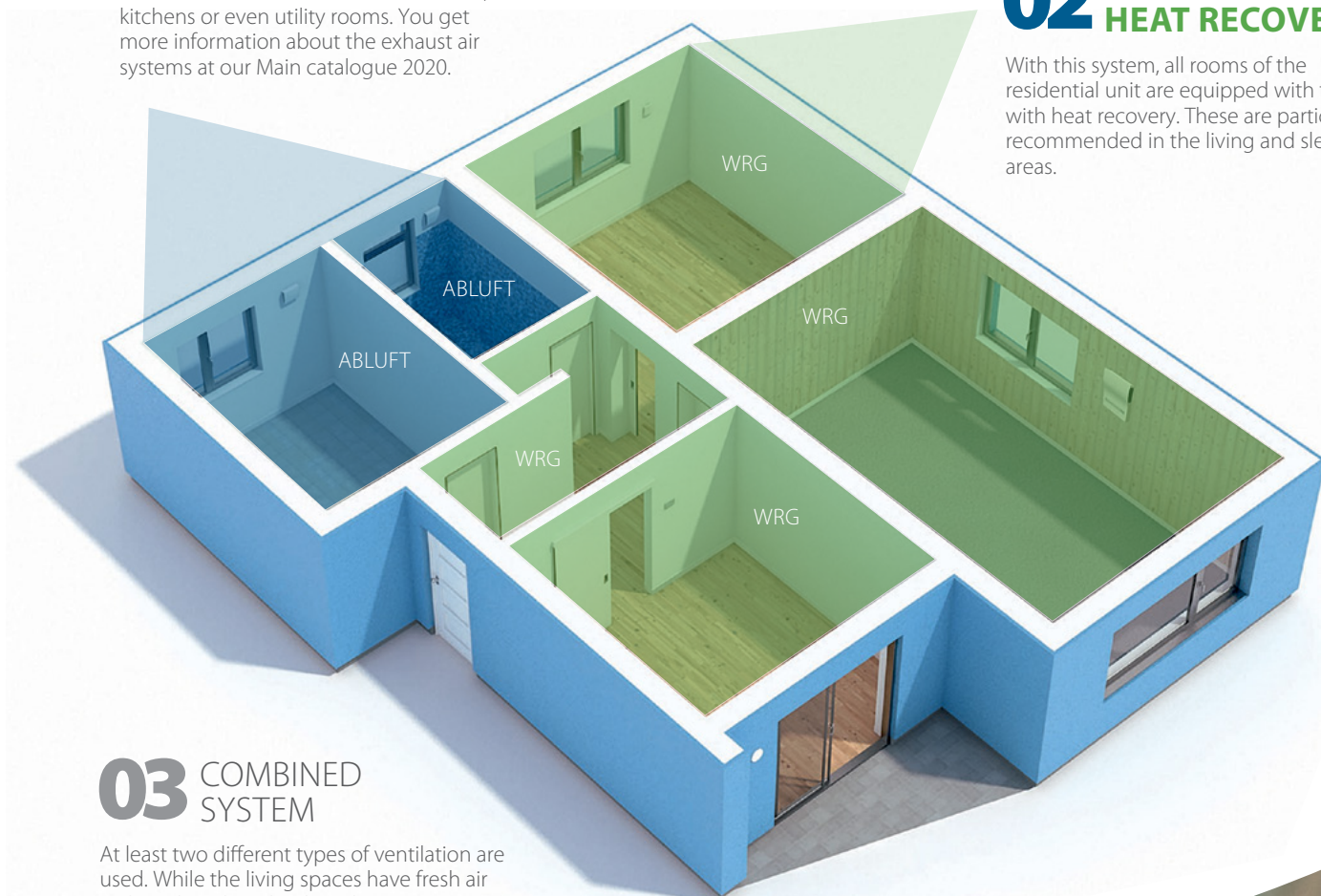


## 01 EXHAUST SYSTEM

Exhaust air systems are very well suited for functional rooms such as bathrooms, kitchens or even utility rooms. You get more information about the exhaust air systems at our Main catalogue 2020.

## 02 SYSTEM WITH HEAT RECOVERY

With this system, all rooms of the residential unit are equipped with fans with heat recovery. These are particularly recommended in the living and sleeping areas.



## 03 COMBINED SYSTEM

At least two different types of ventilation are used. While the living spaces have fresh air without heat loss thanks to heat recovery units, exhaust air rooms such as the bathroom or kitchen can be ventilated cost-effectively.





# e<sup>2</sup> series

## Flexible in any field

No fan has the decentralized ventilation with heat recovery so characterized like the e<sup>2</sup> from LUNOS.

### e<sup>2</sup>

The classic: proven and efficient for use in living room and bedroom

### e<sup>2</sup>short

The short one: for small outside walls from 200 mm wall thickness

### e<sup>2</sup>60

The solution for the requirements of the future





# e<sup>2</sup> series

## Technichal data



Characteristics	e <sup>2</sup> 60	e <sup>2</sup>	e <sup>2</sup> short
<b>Volume flow</b>	5 - 60 m <sup>3</sup> /h	15 - 38 m <sup>3</sup> /h	15 - 38 m <sup>3</sup> /h
<b>Max. degree of heat supply</b>	96 %	96 %	85 %
<b>Heat supply level according to EN 13141-8</b>	0 - 40: 88 % 0 - 60: 83 %	85 %	75 %
<b>Max. standard sound level difference D<sub>n,e,w</sub></b>	54 dB	54 dB	54 dB
<b>Sound power level L<sub>W</sub></b>	from 18 dB(A)	from 29 dB(A)	from 28 dB(A)
<b>Power consumption</b>	0,4 - 3,3 W	0,7 - 4 W	0,6 - 3,9 W
<b>Minimum installation length</b>	280 mm (lower on request)	280 mm	200 mm
<b>Dimensions</b>	Plug-in module Ø 154 x 243 mm	Plug-in module Ø 154 x 243 mm	Plug-in module Ø 154 x 168 mm
<b>Compatibility</b>	All 160 systems incl. LUNOtherm and external hoods as external finish	All 160 systems incl. LUNOtherm and external hoods as external finish	All 160 systems incl. LUNOtherm and external hoods as external finish
<b>Energy efficiency class</b>	<b>A+</b>	<b>A</b>	<b>A</b>



# e<sup>2</sup>60 [esquaredsixty]

## Ready for the demands of the future.

Thanks to its very low power consumption and intelligent motor control, the e<sup>2</sup>60 is extremely energy efficient and easily achieves energy efficiency class A+.





**e<sup>2</sup>60**

The solution for the demands of the future



**With classified wind pressure stability and high volume flows, the e<sup>2</sup>60 is a reference device in its class.**

The consequent improvement of the ec-technology and the wing aerodynamics ensures particularly low noise emissions. The fact that the e<sup>2</sup>60 achieves the high heat provision level of 88 % is largely due to the newly developed and patented air diffuser, which ensures a particularly even flow through the heat exchanger.

The e<sup>2</sup>60 is the first axial fan to achieve a constant volume flow at high back pressures. This outstanding feature of external motor control ensures that the e<sup>2</sup>60 is the first unit of its type to meet the requirements of pressure class S1 according to DIN 13141-8. This makes it easy to use in areas with high wind pressures, such as on

the coast or at high altitudes. A further advantage of the e<sup>2</sup>60 is its high volume flow bandwidth.

#### Can be combined with inner screens of the 160 series



Standard  
Inner screen



Comfort inner screen  
(plastic design)



Comfort inner screen  
(glass design)



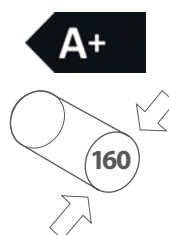
Sound insulation  
Inner screen



Hygiene inner screen  
incl. F7 filter



Hygiene inner screen  
incl. F7 filter



#### F7-FILTER

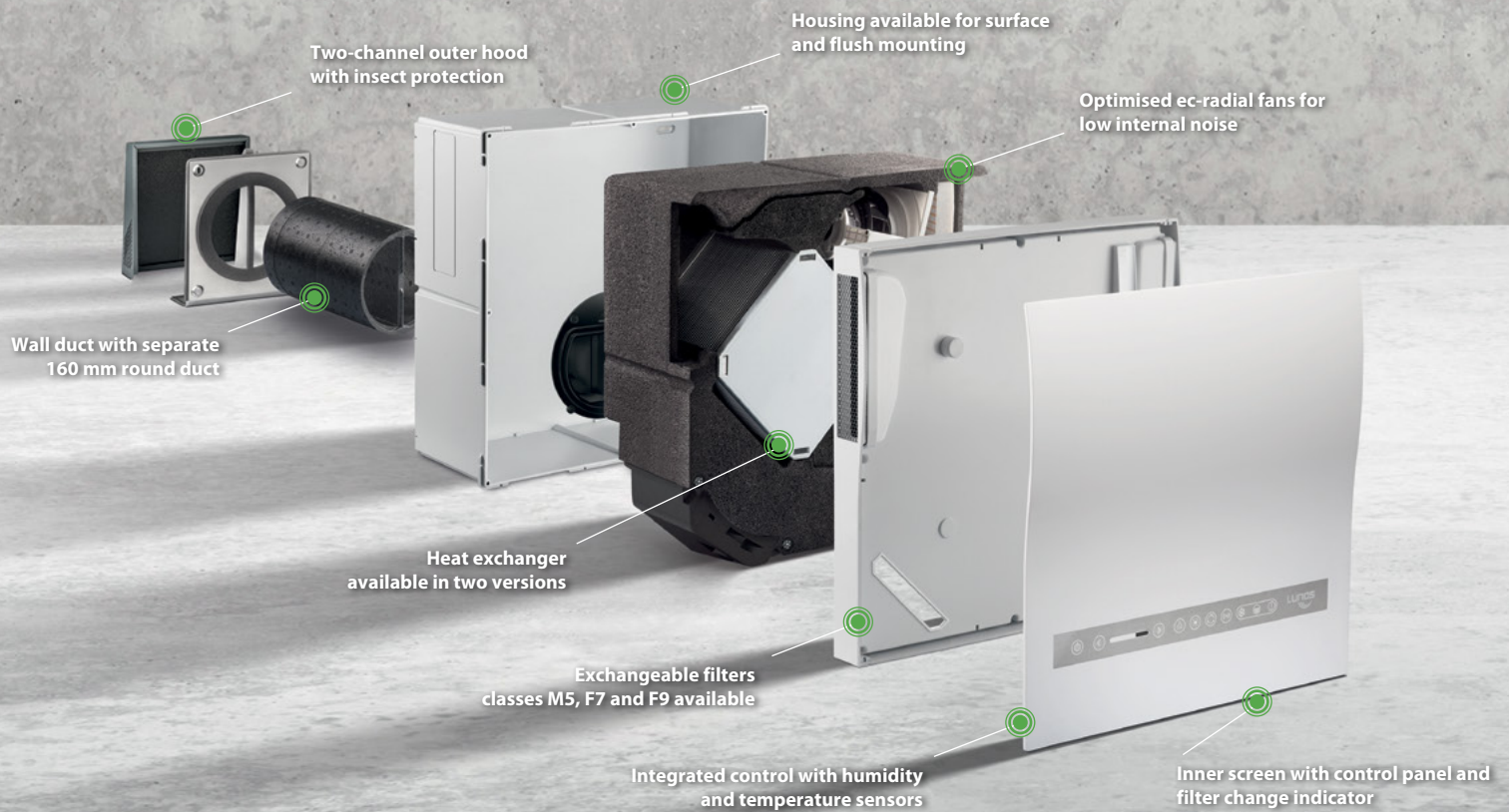
Special pollen and fine dust filters that simply leave annoying particles outside. Included with IBG-H and IBK-H.



# Ne<sup>xt</sup>

## Heat recovery unit

The Ne<sup>xt</sup> is suitable for use in kindergartens, schools, offices, hotels and medical practices as well as in the home. The Ne<sup>xt</sup> also delivers the best results in areas or heights where extraordinary wind loads prevail and in areas where high sound insulation is required.





**Ne<sup>xx</sup>t**

## Decentralized heat recovery unit

**Low noise level and maximum passive soundproofing**

The Ne<sup>xx</sup>t is extremely energy-efficient thanks to its very low power consumption: The ec technology with high efficiency enables low power consumption.

The integrated controller ensures perfect interaction between the various components. Equipped with humidity-temperature sensors, the automatic control system ensures efficient ventilation with moisture protection even in the standard version. Optionally, the Ne<sup>xx</sup>t can be equipped with the FM-EO radio module for control and communication with other LUNOS components and for SmartHome integration.

The heart of the Ne<sup>xx</sup>t is the plug-in unit with heat exchanger, which is available in two versions:

**Ne<sup>xx</sup>t-E**

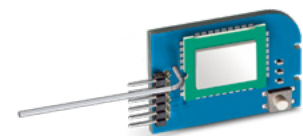
The enthalpy heat exchanger achieves a heat recovery rate of up to 83 %. In addition, the mode of operation of the heat exchanger ensures that it is largely ice-free and provides comfort in the interior even with cold outside air.

**Ne<sup>xx</sup>t-K**

The cost-efficient version with cross-flow heat exchanger achieves a heat recovery rate of up to 80 %.

**OPTIONAL FM-EO**

Wireless module for bidirectional wireless transmission

**OPTIONAL F7- and F9-Filter**

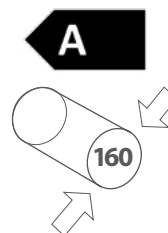
For highest demands on hygiene

**OPTIONAL****Electrical flap closure**

Electrical flap closure 9/KVEN-2 for Ne<sup>xx</sup>t based on the 160 round duct. It opens or closes the panel feed-through automatically when the unit is switched on or off.

**Recommendation**

As an extension of the range of functions and for the use of logging functions, LUNOS recommends the use of the newly developed diagnostic software.



The modular system for the perfect fan



\* from 30 cm an adapter is required for each 10 cm or part thereof of the round duct





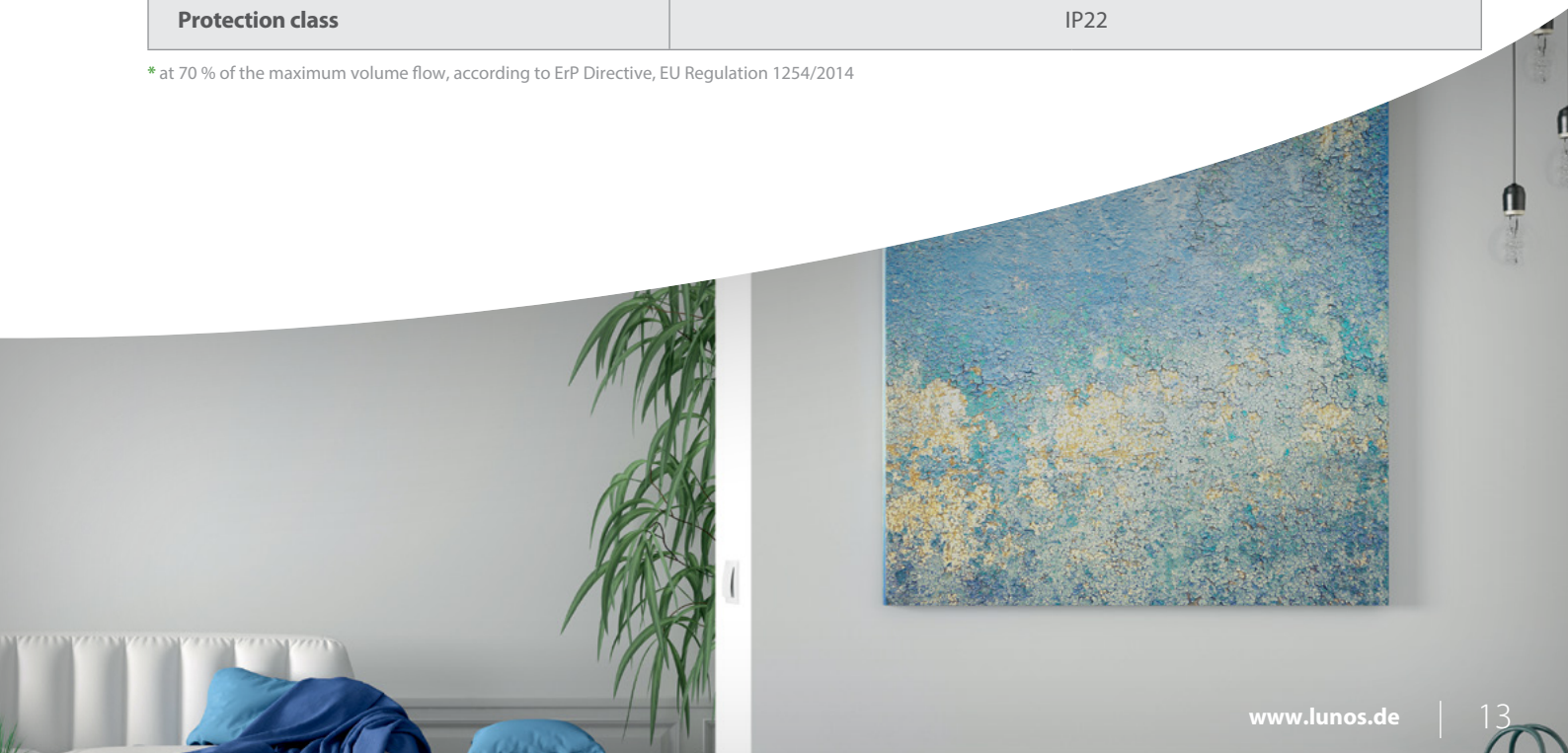
**Ne<sup>xx</sup>t**

Technical data



Characteristics	Ne <sup>xx</sup> t-E	Ne <sup>xx</sup> t-K
Volume flow	15 - 110 m <sup>3</sup> /h	15 - 110 m <sup>3</sup> /h
Max. degree of heat supply	83 %	80 %
Heat supply level according to EN 13141-8	73 %	62 %
Max. standard sound level difference $D_{n,e,w}$	49 dB	
Sound power level $L_W$	from 20 dB(A)	
Power consumption*	22 W	
Supply voltage	200 - 240 V   50/60 Hz (115 V   60 Hz on request)	
Core drilling	162 mm	
Minimum installation length	Surface-mounted: 110 mm, flush-mounted: 280 mm	
Depth for wall mounting	172 mm Housing + 105 mm Flap closure in wall ducting	
Dimensions of the device	480 mm x 480 mm x 170 mm	
Size inner screen	510 mm x 510 mm x 66 mm	
Size outer hood	235 mm x 205 mm x 72 mm	
Energy efficiency class		
Protection class	IP22	

\* at 70 % of the maximum volume flow, according to ErP Directive, EU Regulation 1254/2014



## Reversing technology for exhaust air rooms

For bathrooms, WCs and kitchens





**e<sup>go</sup>**

## Supply and exhaust air in one unit

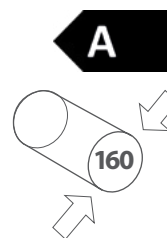
**In one e<sup>go</sup>, two fans provide simultaneous air supply and exhaust. Therefore, operation in pairs is not necessary.**

The e<sup>go</sup> ensures optimum ventilation with heat recovery in bathrooms, WCs and kitchens. It combines supply and exhaust air by means of two small fans located inside the fan.

The e<sup>go</sup> is one of the world's smallest fans for domestic ventilation with heat recovery in the two-channel unit class.

**Outer hood**

The e<sup>go</sup> can be combined with the two-channel outer hood on the facade.


**LUNOS**  
 energy-efficient
**TECHNICAL DATA****Volume flow**

5 - 20 m<sup>3</sup>/h (Heat recovery), 45 m<sup>3</sup>/h (Exhaust air))

**Max. degree of heat supply**

82 %

**Heat supply level according to EN 13141-8**

75 %

**Max. standard sound level difference D<sub>n,e,w</sub>**

46 dB

**Sound power level\* L<sub>W</sub>**

from 28 dB(A)

**Power consumption**

1 - 4,9 W

**Supply voltage**

12 V DC SELV

**Core drilling**

Ø 162 mm

**Minimum installation length**

300 mm

**Dimensions**

Screen 237 x 217 mm

Build-in device Ø 154 x 300 mm

**Protection class**

IP22

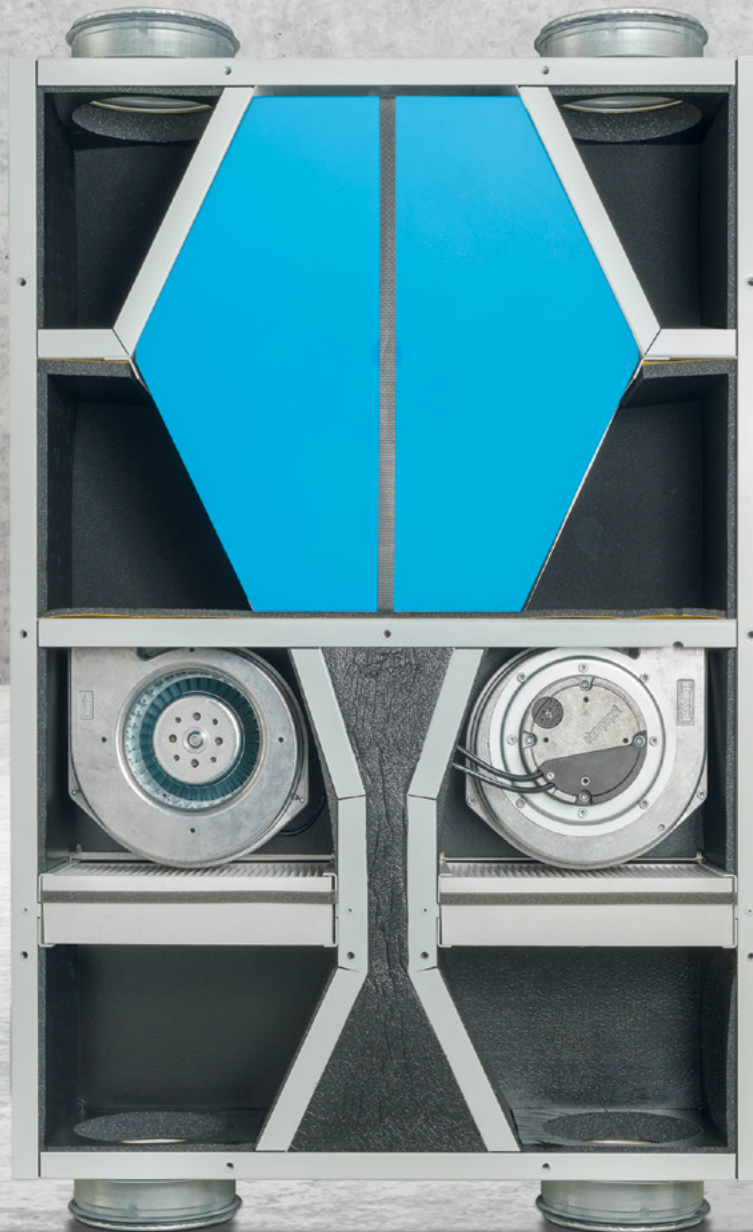
\* Sound power level:  
The sound power level indicates how "loud" a device is.

**e<sup>go</sup>**

# LUNOMAT

## Central home ventilation unit

Fresh air supply of the living areas, by pressure-resistant and highly efficient ec radial motors for volume flows up to 125 m<sup>3</sup>/h.





# LUNOMAT

The first central home ventilation unit from LUNOS



## Highly efficient enthalpy heat exchanger with a heat supply efficiency of up to 95 %

With a highly efficient enthalpy heat exchanger and a heat supply level of up to 95%, the LUNOMAT is the performance professional for the supply of fresh air to living spaces.

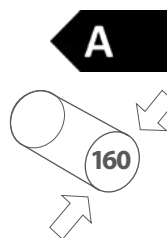
Thanks to exchangeable filters of the classes F7 and F9, the LUNOMAT can be adapted to the most diverse requirements. The pressure-resistant and highly efficient ec radial motors are also suitable for volume flows of up to 125 m<sup>3</sup>/h at 100 Pa and are thus able to withstand even strong air pressures on the coast or at high altitudes.

In short: The LUNOMAT is the all-round talent from LUNOS for central apartment ventilation.

The LUNOMAT can be operated by almost all LUNOS control systems: TAC, universal control and gesture control. Of course, it is also possible to receive commands from the common smart home controls of homee via optional wireless modules.

### OPTIONAL **F9-Filter**

Exchangeable filters of classes F7 and F9 available



## TECHNICAL DATA

### Volume flow

40 - 125 m<sup>3</sup>/h at 100 Pa

### Heat supply level

84 %

### Heat supply level according to PHI

83 %

### Device sound

at 100 m<sup>3</sup>/h, 100 Pa

45 dB(A)

### Specific

Power consumption (SPI)

at 50 Pa\*

0,3 W/(m<sup>3</sup>/h)

### Max. power consumption

at 125 m<sup>3</sup>/h, 100 Pa

52 W

### Mains voltage

100 - 240 V | 50/60 Hz

### External and internal leakage

Class A1

### Dimensions (H x W x D)

805 x 555 x 190 mm

### Installation options

New construction and renovation

Ceiling and wall mounting

4 x DN 125 mm Outlets

\* according to EN 13141-7 at reference volume flow

LUNOMAT



# Controls



## Whether with gesture or automated

LUNOS offers control systems that can be adapted exactly to the wishes and requirements.

### 5/UNI-FT | 5/W2U

Can be controlled automatically, standard with humidity/temperature control and time delay module



### Smart Comfort

Especially easy to operate: one touch of a button is enough



### Gesture Control

Contactless controllable with 60 RGB LEDs and many standby display options



### TAC

The all-rounder from LUNOS can be configured for the most diverse ventilation scenarios



### Gesture Control

Universal controllers and devices of the Ne<sup>xt</sup> and/or Silvento ec series can be connected to the two outputs of the Gesture control.



More than with other ventilation systems, decentralised ventilation is about effectiveness and the sensible addition of the various fans in the system. For the optimal implementation of energy-efficient ventilation, control systems are required that network the ventilation system in a meaningful way while ensuring easy operation.

LUNOS provides different types of control: the Universal Control, the Touch Air Comfort, the Smart Comfort and the Gesture Control.



# Wireless technology

## For easy smart home connectivity

A wireless technology that meets the high requirements of LUNOS must be extremely energy efficient and safe.



The bidirectional wireless technology transmits reliable signals with very small amounts of energy. The transmitters can be operated partly without batteries and therefore with low maintenance. The necessary energy is generated by the piezoelectricity of switches or solar cells.

In order to control the ventilation system via smartphone, tablet or computer, LUNOS recommends the use of the homee Smart Home central unit, which already has a

WLAN interface as standard and thus provides for the connection to the Internet. With the EnOcean extension module from homee the LUNOS radio modules are integrated into the smart home control center.

But the easy-to-use interface, available as an app for iOS and Android or as a WebApp, can be used to control more than just the ventilation: all smart home functions can be operated via this one application.

### Brain Cube & EnOcean Cube

The Brain Cube as basis of the homee Smart Home system with the EnOcean Cube as link to the LUNOS products makes the ventilation system smart.

# Inner screens

## 160 series

### Comfort inner screen

The direct sound impact on the resident is reduced - the result is a more pleasant living experience. The glass variants also impress with their elegant and modern design.



#### In plastic design

(H x W x D) 191 x 180 x 60 mm

Description: **9/IBK**



#### In plastic design

incl. F7 filter,  
increased hygiene protection  
(H x W x D) 191 x 180 x 77 mm  
Description: **9/IBK-H**



#### In glass design

(H x W x D) 197 x 185 x 66 mm

Description: **9/IBG**



#### In glass design

incl. F7 filter,  
increased hygiene protection  
(H x W x D) 197 x 185 x 83 mm  
Description: **9/IBG-H**

### Standard inner screen

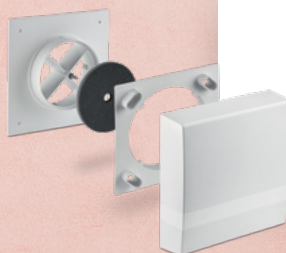
Simple screen with timeless elegance for universal use in the 160 series.



(H x W x D) 180 x 180 x 35 mm  
Description: **9/IBE**

### Sound insulation inner screen

Increase of the standard sound level difference by up to 6 dB, reduction of the inherent noise, incl. washable filters, one piece each of filter class G2 and G3.



incl. G2 and G3 filters  
(H x W x D) 250 x 250 x 78 mm  
Description: **9/IBS**



# External grille & Outer hoods

Round, square & soundproofed



## Plastic grille Ø 180 mm

for round ducts Ø 160 mm  
 with facade protection ring,  
 Claw fastening and insect protection  
 Description: 1/BE 180 sanded  
 Description: 1/WE 180 white  
 Description: 1/AZ 180 anthracite



## Metal grille Ø 175 mm

for round ducts Ø 125 - 160 mm,  
 Insect screen, pluggable  
 Description: 1/RME 175 stainless steel  
 Description: 1/RMK 175 copper



## Plastic grille Ø 115 mm

for round ducts Ø 90 - 100 mm,  
 Claw fastening and insect protection  
 Description: 1/BE 115 sanded  
 Description: 1/WE 115 white  
 Description: 1/AZ 115 anthracite



## Metal grille □ 228 mm

for round ducts Ø 160 mm,  
 Insect screen, pluggable  
 Description: 1/QME 228 stainless steel  
 Description: 1/QMK 228 copper



## Metal grille Ø 150 mm

for round ducts Ø 80 - 125 mm,  
 Insect screen, pluggable  
 Description: 1/RME 150 stainless steel  
 Description: 1/RMK 150 copper



## Two-channel outer hood Aluminium

(H x W x D) 235 x 205 x 72 mm  
 for round ducts Ø 160 mm, insect screen,  
 with sound insulation, for screwing.  
 Increase of the standard sound level difference  
 by up to 6 dB.  
 Description: 1/HAZ-2 anthracite powder-coated  
 Description: 1/HWE-2 white powder-coated



## Outer hood aluminium

(H x W x D) 170 x 140 x 72 mm  
 for round ducts up to Ø 105 mm, insect screen, with sound insulation, to screw.  
 Increase of the standard sound level difference by up to 6 dB.  
 Description: 1/HWE 115 white powder-coated  
 Description: 1/HAZ 115 anthracite powder-coated

## Two-channel variant for e<sup>90</sup> and Ne<sup>xx</sup>t



## Outer hood aluminium

(H x W x D) 235 x 205 x 72 mm  
 for round ducts Ø 160 mm, insect screen, with sound insulation, to screw.  
 Increase of the standard sound level difference by up to 6 dB.  
 Description: 1/HWE white powder-coated  
 Description: 1/HAZ anthracite powder-coated



17 Claregalway Corporate Park,  
Claregalway, Co. Galway, Ireland

Email: [sales@partel.ie](mailto:sales@partel.ie)  
Phone: +353 0818 333355

[www.partel.ie](http://www.partel.ie)  
[www.partel.co.uk](http://www.partel.co.uk)

**WWW.LUNOS.IE** QUALITY IS THAT STANDS THE TEST OF TIME